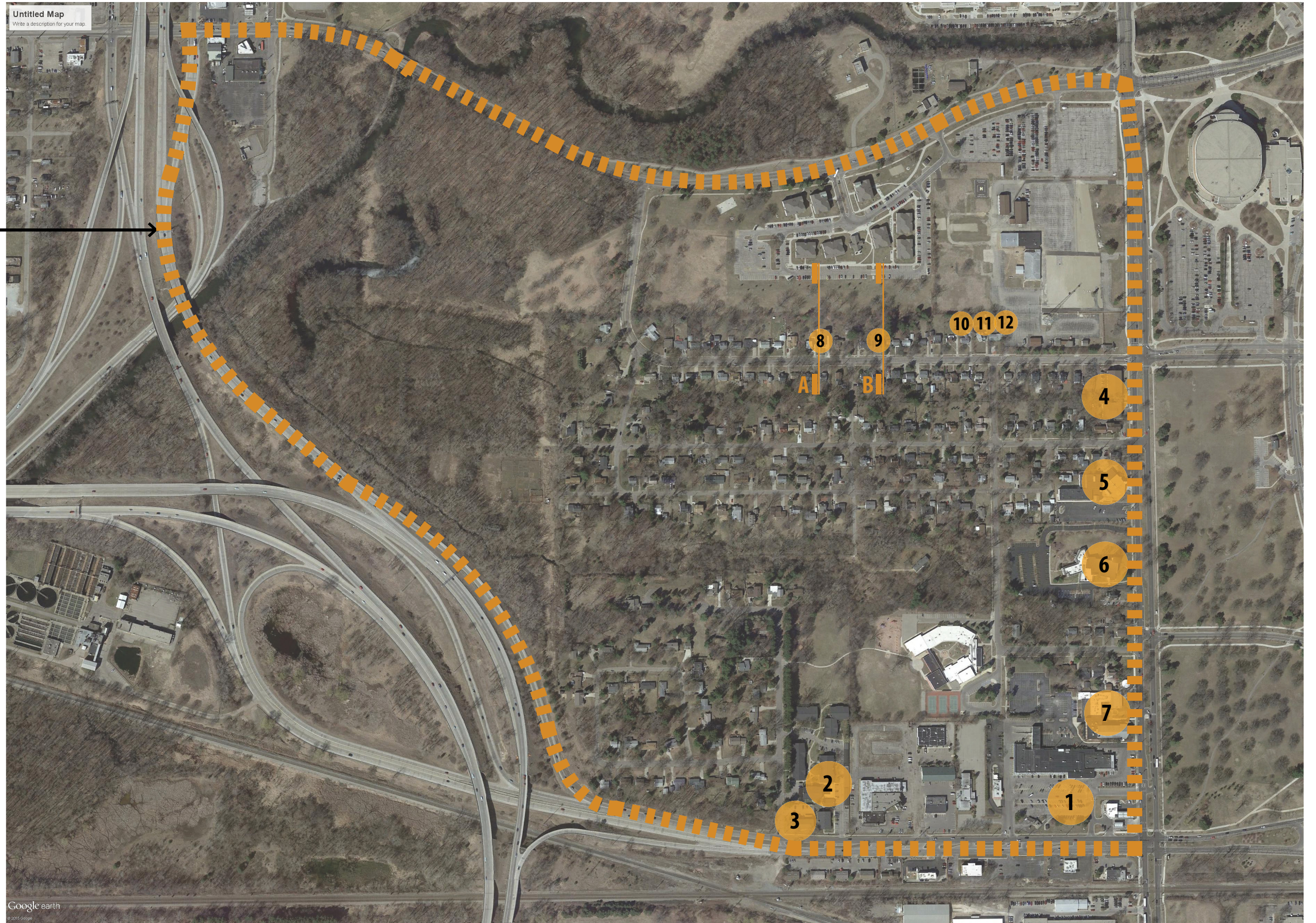


RED CEDAR  
NEIGHBORHOOD  
BOUNDARY



KEY PLAN

**Michigan State University  
 Special Housing Needs**

Revisions

**Revision**

Date	<input checked="" type="checkbox"/> Preliminary
Drawn	<input type="checkbox"/> Construction
<b>jms</b>	<input type="checkbox"/> Record
Checked	<b>Do not scale</b>
Approved	Use figured dimensions only

Bidpak Number

Job Number

**2014151**

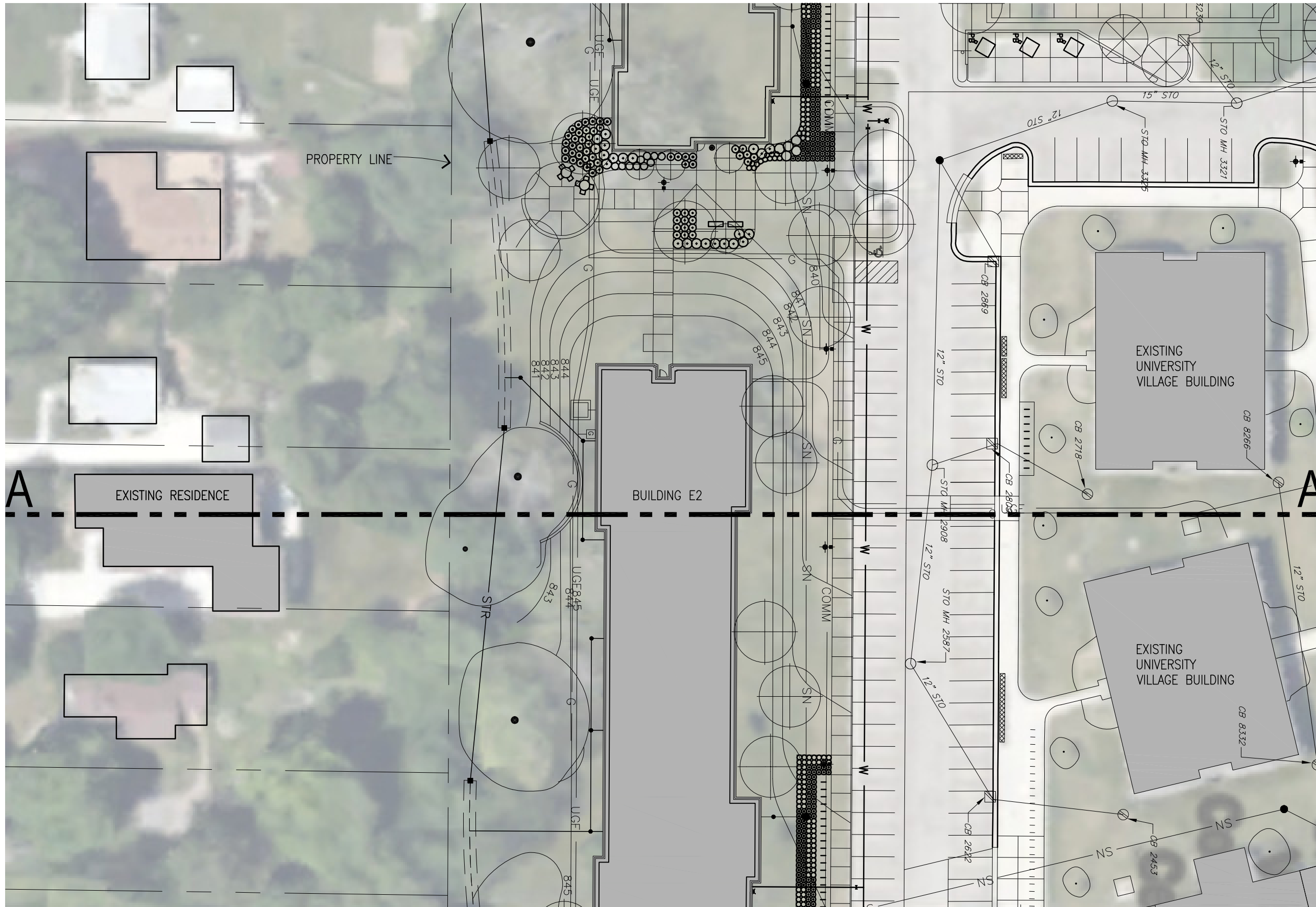
Title

**Site Plan  
 Section A**

Scale: 1"=40'-0"

Sheet

**1**



Site Plan Section A

**Michigan State University  
 Special Housing Needs**

Revisions

**Revision**

Date	<input checked="" type="checkbox"/> Preliminary
Drawn	<input type="checkbox"/> Construction
Checked	<input type="checkbox"/> Record
Approved	<input type="checkbox"/> Do not scale Use figured dimensions only

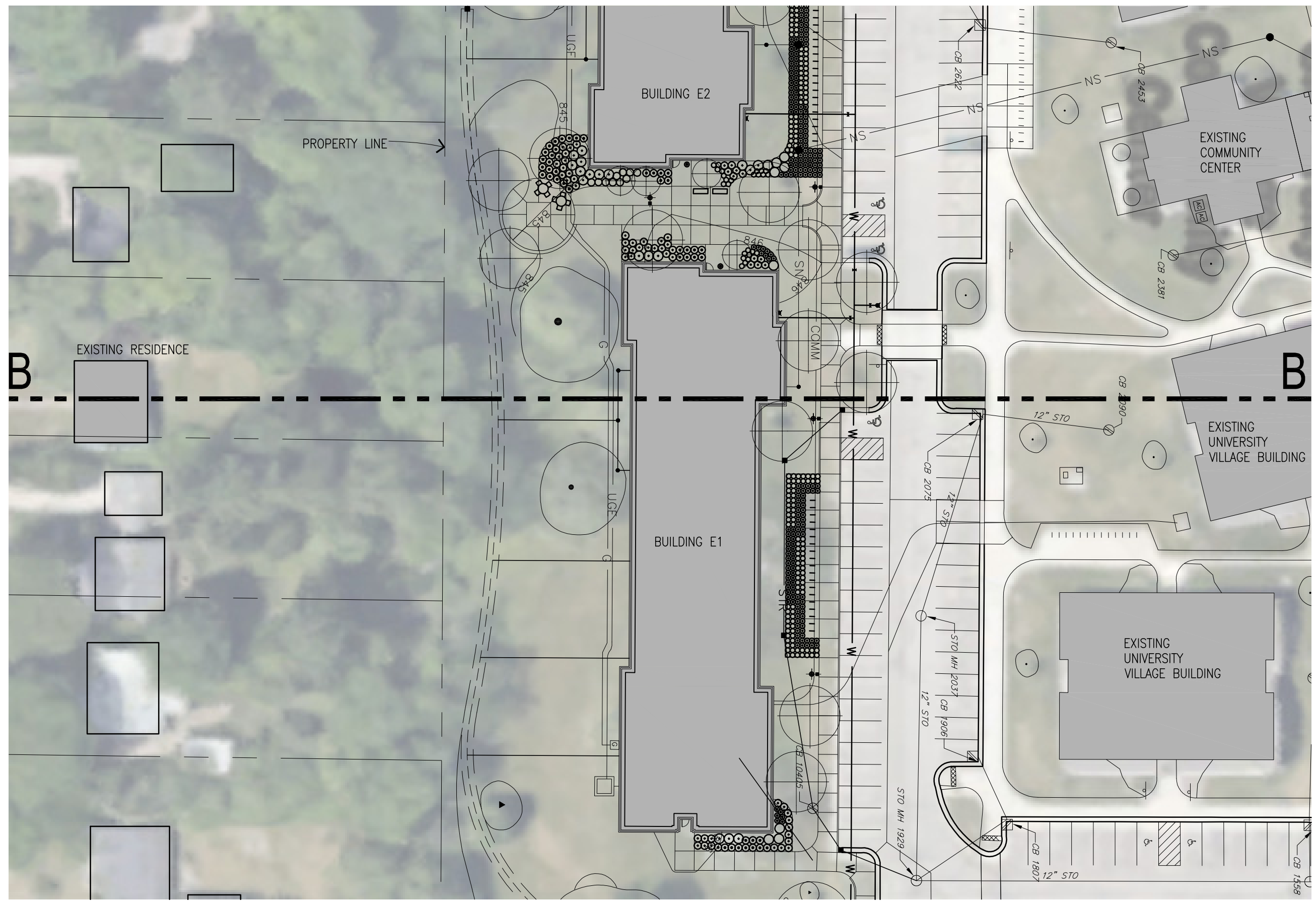
Bidpak Number

Job Number  
**2014151**

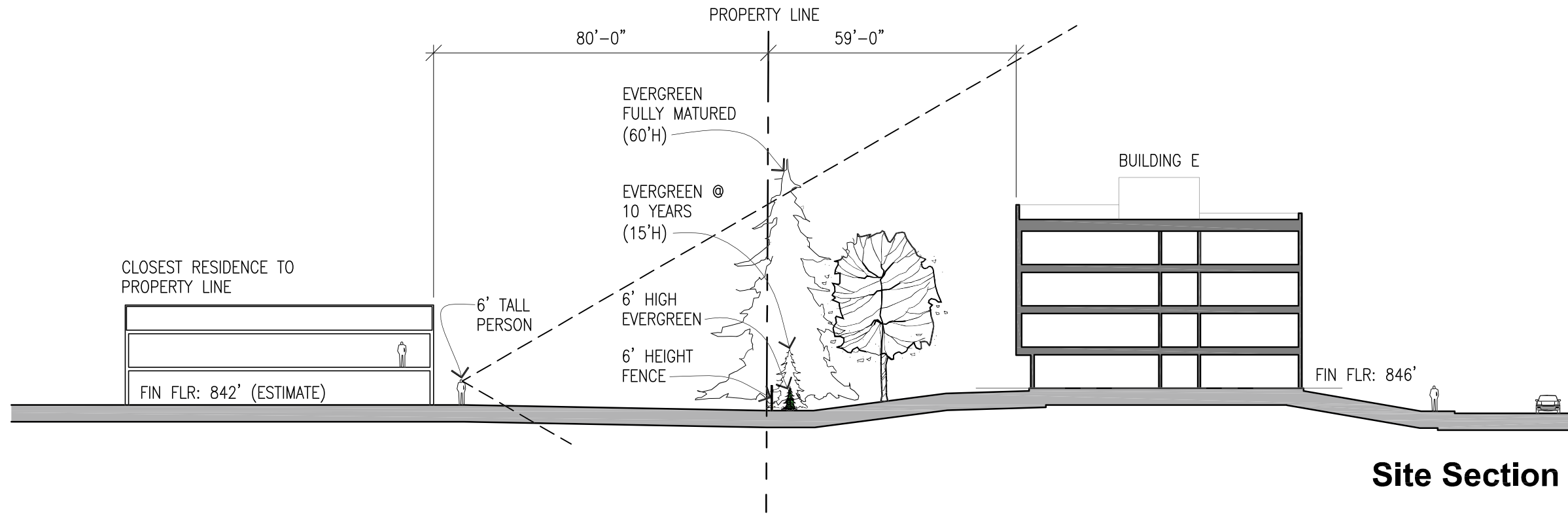
Title  
**Site Plan  
 Section B**

Scale: 1"=40'-0"

Sheet  
**2**

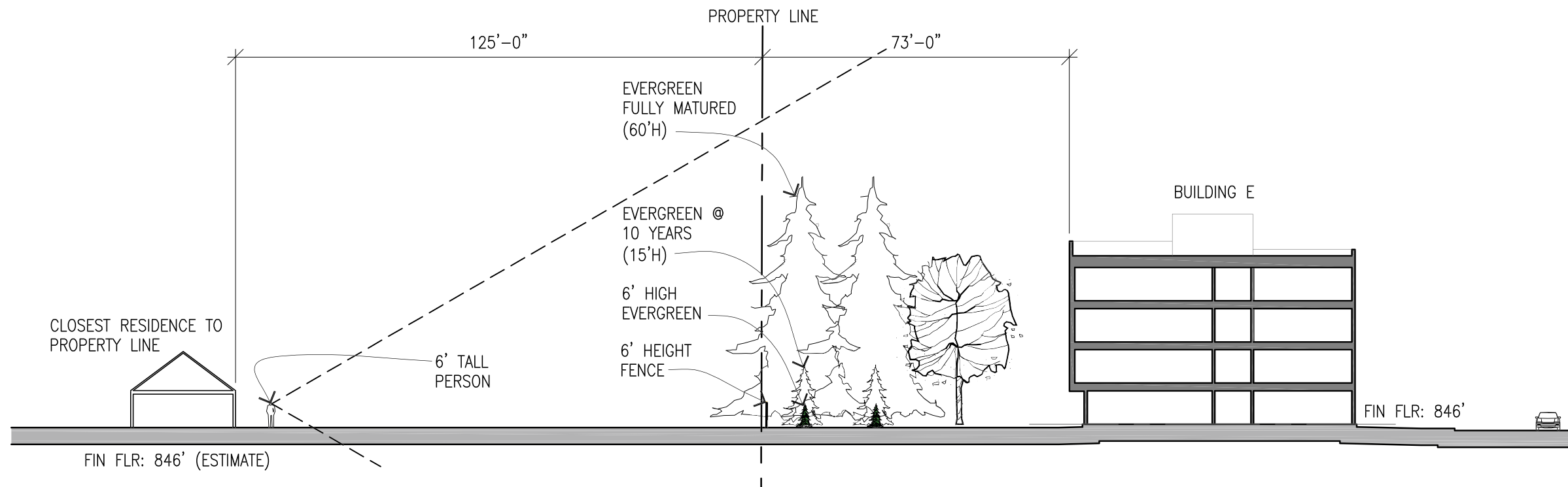


Site Plan Section B



**Site Section A**

Revisions



**Site Section B**

**Revision**

Date	<input checked="" type="checkbox"/> Preliminary
Drawn	<input type="checkbox"/> Construction
<b>jms</b>	<input type="checkbox"/> Record
Checked	<b>Do not scale</b>
Approved	Use figured dimensions only

Bidpak Number

Job Number

**2014151**

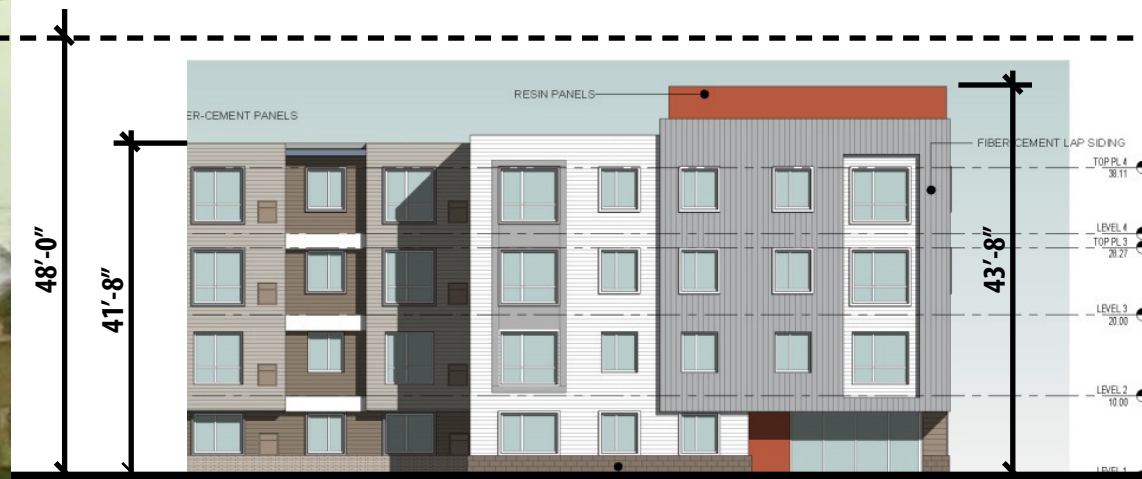
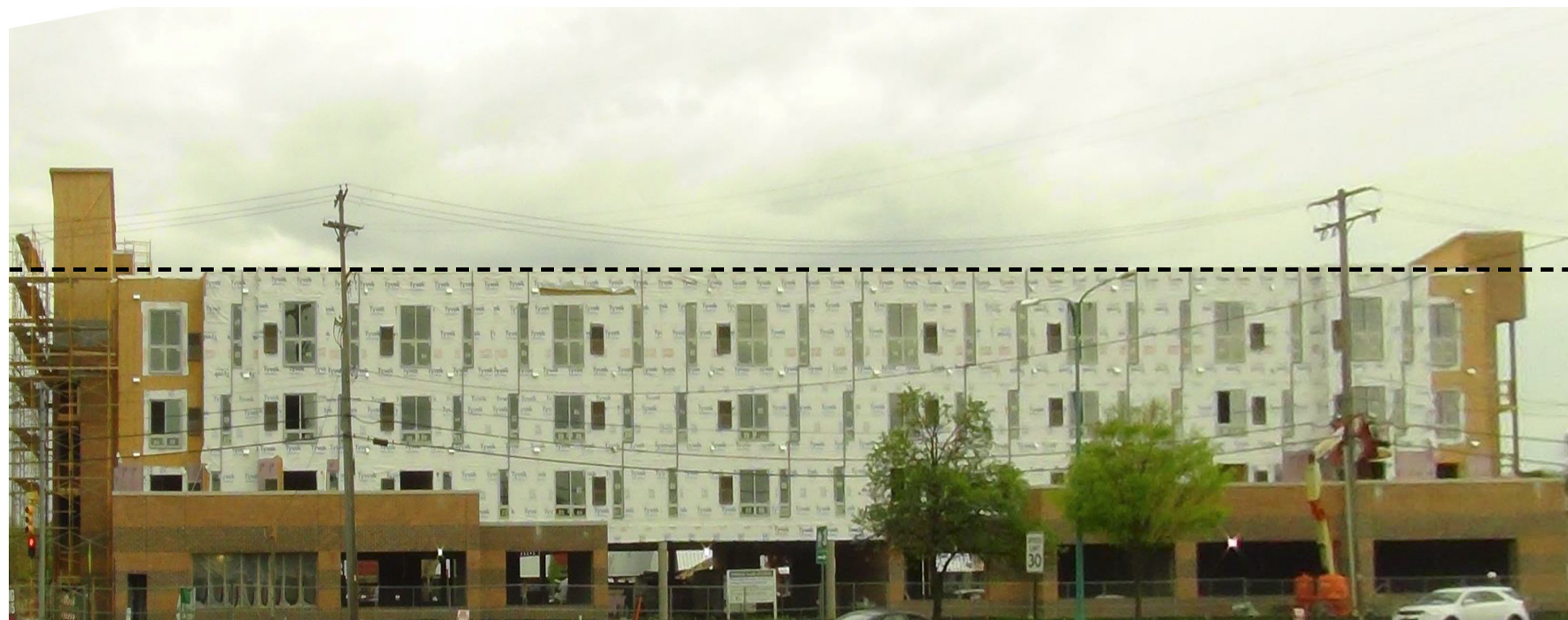
Title

**Site Sections A + B**

Scale: 1"=30'-0"

Sheet

**3**



PROPOSED FAMILY HOUSING ELEVATION

# 1. TROWBRIDGE



+/- 23'-4"

41'-8"



PROPOSED FAMILY HOUSING ELEVATION

## 2. ARBOR FORREST APARTMENTS



PROPOSED FAMILY HOUSING ELEVATION

### 3. ARBOR FORREST APARTMENTS



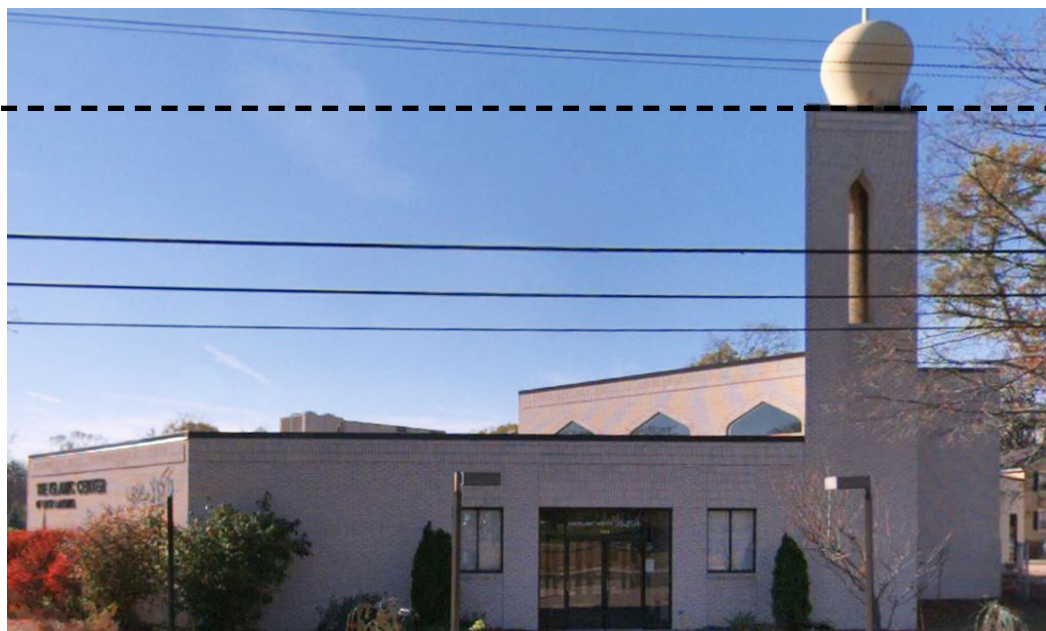
+/- 26'-0"

41'-8"



PROPOSED FAMILY HOUSING ELEVATION

#### 4. AVENUE APARTMENTS

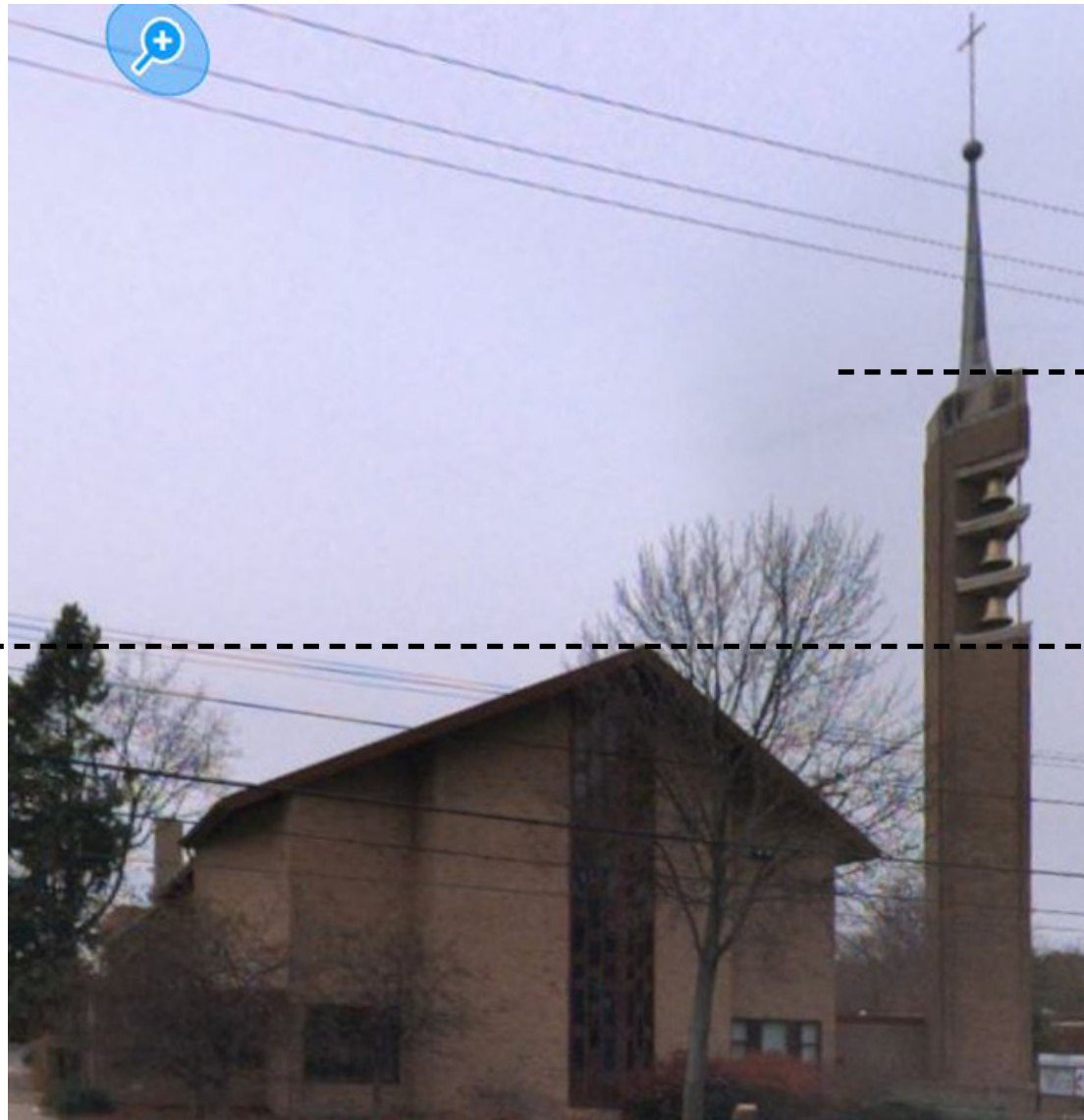


PROPOSED FAMILY HOUSING ELEVATION

## 5. GREATER LANSING ISLAMIC SCHOOL



6. UNIVERSITY LUTHERAN CHURCH



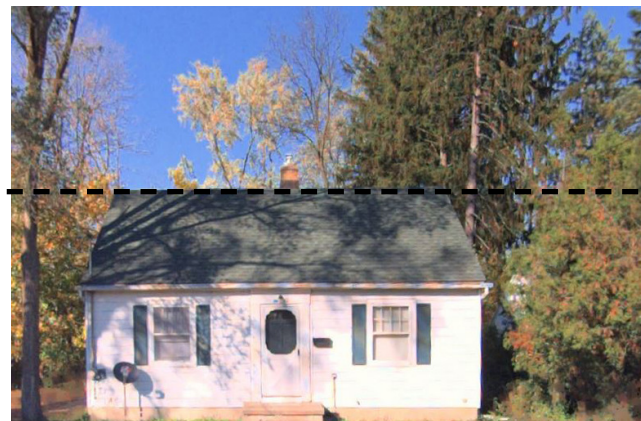
PROPOSED FAMILY HOUSING ELEVATION

7. UNIVERSITY UNITED METHODIST CHURCH



PROPOSED FAMILY HOUSING ELEVATION

8. RESIDENCE ON MARIGOLD - house closest to property line



+/- 18'-0"

41'-8"



PROPOSED FAMILY HOUSING ELEVATION

9. RESIDENCE ON MARIGOLD - house farthest from property line



PROPOSED FAMILY HOUSING ELEVATION

10. RESIDENCES ON MARIGOLD



PROPOSED FAMILY HOUSING ELEVATION

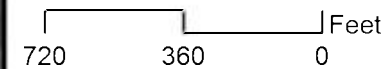
11 & 12. RESIDENCES ON MARIGOLD



Image Date: 1938



Image Scale: 1:6,000



RS&GIS

Imagery Archive; 517.355.3771

[www.rsgis.msu.edu/archive.htm](http://www.rsgis.msu.edu/archive.htm)

2012 Imagery Source: USDA APFO

Soils Source: NRCS

Wetlands Source: USFWS

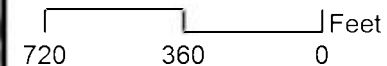
Topography Source: USGS



Image Date: 1950



Image Scale: 1:6,000



RS&GIS

Imagery Archive; 517.355.3771

[www.rsgis.msu.edu/archive.htm](http://www.rsgis.msu.edu/archive.htm)

2012 Imagery Source: USDA APFO

Soils Source: NRCS

Wetlands Source: USFWS

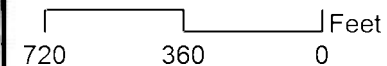
Topography Source: USGS



Image Date: 1955



Image Scale: 1:6,000



RS&GIS

Imagery Archive; 517.355.3771

[www.rsgis.msu.edu/archive.htm](http://www.rsgis.msu.edu/archive.htm)

2012 Imagery Source: USDA APFO

Soils Source: NRCS

Wetlands Source: USFWS

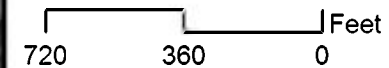
Topography Source: USGS



Image Date: 1963



Image Scale: 1:6,000



RS&GIS

Imagery Archive; 517.355.3771

[www.rsgis.msu.edu/archive.htm](http://www.rsgis.msu.edu/archive.htm)

2012 Imagery Source: USDA APFO

Soils Source: NRCS

Wetlands Source: USFWS

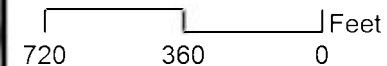
Topography Source: USGS



Image Date: 1970



Image Scale: 1:6,000



RS&GIS

Imagery Archive; 517.355.3771

[www.rsgis.msu.edu/archive.htm](http://www.rsgis.msu.edu/archive.htm)

2012 Imagery Source: USDA APFO

Soils Source: NRCS

Wetlands Source: USFWS

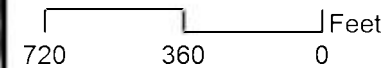
Topography Source: USGS



Image Date: 1973



Image Scale: 1:6,000



RS&GIS

Imagery Archive; 517.355.3771

[www.rsgis.msu.edu/archive.htm](http://www.rsgis.msu.edu/archive.htm)

2012 Imagery Source: USDA APFO

Soils Source: NRCS

Wetlands Source: USFWS

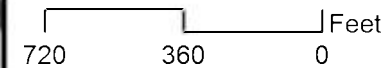
Topography Source: USGS



Image Date: 1976



Image Scale: 1:6,000



RS&GIS

Imagery Archive; 517.355.3771

[www.rsgis.msu.edu/archive.htm](http://www.rsgis.msu.edu/archive.htm)

2012 Imagery Source: USDA APFO

Soils Source: NRCS

Wetlands Source: USFWS

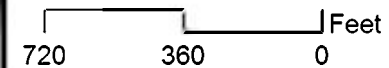
Topography Source: USGS



Image Date: 1981



Image Scale: 1:6,000



RS&GIS

Imagery Archive; 517.355.3771

[www.rsgis.msu.edu/archive.htm](http://www.rsgis.msu.edu/archive.htm)

2012 Imagery Source: USDA APFO

Soils Source: NRCS

Wetlands Source: USFWS

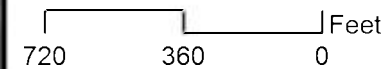
Topography Source: USGS



Image Date: 1985



Image Scale: 1:6,000



RS&GIS

Imagery Archive; 517.355.3771

[www.rsgis.msu.edu/archive.htm](http://www.rsgis.msu.edu/archive.htm)

2012 Imagery Source: USDA APFO

Soils Source: NRCS

Wetlands Source: USFWS

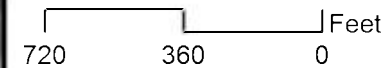
Topography Source: USGS



Image Date: 1986



Image Scale: 1:6,000



RS&GIS

Imagery Archive; 517.355.3771

[www.rsgis.msu.edu/archive.htm](http://www.rsgis.msu.edu/archive.htm)

2012 Imagery Source: USDA APFO

Soils Source: NRCS

Wetlands Source: USFWS

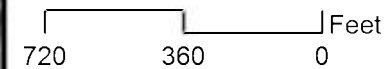
Topography Source: USGS



Image Date: 1991



Image Scale: 1:6,000



RS&GIS

Imagery Archive; 517.355.3771

[www.rsgis.msu.edu/archive.htm](http://www.rsgis.msu.edu/archive.htm)

2012 Imagery Source: USDA APFO

Soils Source: NRCS

Wetlands Source: USFWS

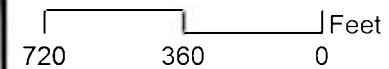
Topography Source: USGS



Image Date: 1992



Image Scale: 1:6,000



RS&GIS

Imagery Archive; 517.355.3771

[www.rsgis.msu.edu/archive.htm](http://www.rsgis.msu.edu/archive.htm)

2012 Imagery Source: USDA APFO

Soils Source: NRCS

Wetlands Source: USFWS

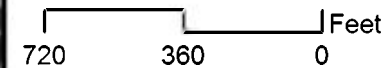
Topography Source: USGS



Image Date: 1995



Image Scale: 1:6,000



RS&GIS

Imagery Archive; 517.355.3771

[www.rsgis.msu.edu/archive.htm](http://www.rsgis.msu.edu/archive.htm)

2012 Imagery Source: USDA APFO

Soils Source: NRCS

Wetlands Source: USFWS

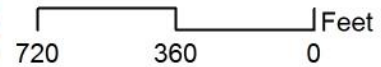
Topography Source: USGS



Image Date: 2005



Image Scale: 1:6,000



RS&GIS

Imagery Archive; 517.355.3771

[www.rsgis.msu.edu/archive.htm](http://www.rsgis.msu.edu/archive.htm)

2012 Imagery Source: USDA APFO

Soils Source: NRCS

Wetlands Source: USFWS

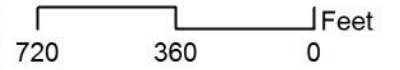
Topography Source: USGS



Image Date: 2012



Image Scale: 1:6,000



RS&GIS

Imagery Archive; 517.355.3771

[www.rsgis.msu.edu/archive.htm](http://www.rsgis.msu.edu/archive.htm)

2012 Imagery Source: USDA APFO

Soils Source: NRCS

Wetlands Source: USFWS

Topography Source: USGS